

Style Works 2000 Korg Pa

by

EMC

Operation Manual

Congratulations for purchasing our product. We wish you many hours of pleasure when converting, editing and creating your styles.

This manual describes the function for all program variations. If you have decided for Style Works Universal you will have access to all mentioned functions. For single versions please only pay attention to the relevant chapters for your version. As proceeding is very similar in all versions you will be able to make best use of the program with all its features in any case.

Table of Content

License agreement	3
System requirements	4
Installation	4
Registration	5
Program start	7
Style Module	8
Play Style Module	10
Style Converter	12

License agreement

Before starting this software, you shall be aware of the following licence and copyright regulations.

By installation and running the program the user accepts the following license agreement in all points:

The user is permitted to use this software on a single computer system only. The user is permitted to make one backup copy of the software. Copying and distributing the software (even for free) and manipulations on the program code are strictly prohibited.

Copying and re-printing the manual in total or partially is prohibited, unless the owner of the copyright gives his written permit.

The conversion of musical data being subject to copyrights of their relevant manufacturers is permitted for private use only. Making use of styles having been created from copyright-protected data by means of this program for commercial purposes is strictly forbidden and may be prosecuted according to the laws of your country.

The maker of this program takes no responsibility for malfunctions or results of malfunctions. Furthermore, he cannot guarantee this program to match the expectations of the buyer.

Violations of above mentioned license regulation may be taken to court.

Copyright EMC 1994 - 2004

All rights reserved

EMC Software Vertriebs GmbH & CoKG

Postfach 100252

D 51402 Bergisch Gladbach

Germany

System requirements

The minimum configuration for Style Works 2000 is a computer with a Pentium 133 MHz processor, 32 MB RAM and Windows 98 and a monitor with a minimum resolution of 800x 600 pixels and 256 colours.

The program works with Windows 98, ME, 2000 and XP. Running under NT is possible but we cannot guarantee for appropriate functionality in every case.

Installation

As usual Style Works 2000 is being installed by means of a setup program. Click the “Start” box in the Windows task bar and then on “Execute”.

Enter the following command line:

“a:\setup.exe” resp. when installing from CD rom the letter of the CD drive and the rest of the command line, e.g. “g:\setup.exe”.

Now the setup program starts and the installation is being executed automatically. Please follow the advice given by the program. In case there any out of date system files required for the program these will be replaced and the computer must be re-booted. The setup program will inform you about this operation if necessary.

After the installation a program group will be installed from where you can start the program by selecting “Start > Programs > EMC Style Works” (Standard installation). The name and location of the installation folder can of course be selected by free choice, we recommend to maintain the default

path though if there is no real reason for a different installation path.

Attention: While installing all other applications should be closed to avoid conflicts in accessing system files.

In case the setup program does not start, please deactivate virus scanners and firewalls as they may prevent access to system files by the setup program.

Of course you can reactivate them after the installation has been executed.

Registration

The program can be run for four days from the date of first run without a registration.

When clicking the registration form and clicking the “Okay” button the program will tell you how many days are still left.

After the four days are over you still have access to the registration form, but no more to any other program functions.

To register proceed like this:

After starting the program the registration form shows up. Now click the “Start Registration” button and insert the disk carrying the serial number label into the floppy drive (resp. the registration disk for versions on CD).

Confirm to have the disk inserted when clicking (normally) “Drive A”. The disk must not be write-protected, unless you will get an error message. After some seconds the serial number and a (random) PIN1 number will show up in the registration form.

To receive your PIN2 you now have the following options:

- Call the telephone number displayed in the registration form (24 hours available) and tell our employee the serial number and PIN1 as currently displayed in the program.

- You make use of the registration form in our shop at www.emc-musicsoftware.de > “English” > “Registration”
- Simply write an e-mail containing the above mentioned data to EmcSoftware@aol.com or info@emc-musicsoftware.de .

After receiving your PIN2 enter this number into the box carrying the two question marks (do not forget to remove them) and confirm your entry by clicking “Okay” or pushing the “Enter” resp. “Return” key. If you have entered the number properly you get a confirmation message saying your program has been registered. From now on the registration form will not show up anymore and the program will start normally.

If you want to install the program on another computer you must repeat the registration procedure.

A change of the operation system of a complete new installation of your computer may require a repetition of the registration as well.

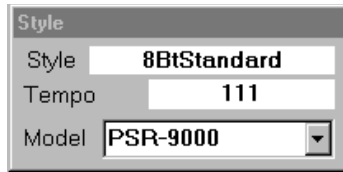
Program start

After you have started Style Works 2000 the main page of the program will show up. At the bottom end of the screen the current operation mode is being displayed as text and there is also the image of the relevant instrument.

In the left column the available modules show up. By clicking one of the icons (e.g. “Style Converter”) the relevant module is being opened. Only one module can be opened at a time; this rule is not valid for the “Play Style” module which can be used together with many other modules.

Further the small “Style” module showing the style name and tempo is always active. In case the “Play Style” or “Style” module has been moved into the background by clicking one of the bigger modules you can always get it back into the foreground by clicking the relevant entry in the “Select” menu

The “Style” module



Here you can alter the name of the current style and the tempo. For many instruments the internal style name is not necessarily identical to the name which is used for saving the style to disk. In the “Style” module you define the internal name which will be displayed in the instrument (after loading). This name is also the default setting for the file name, but you are free to choose any other name for saving.

Special features:

Yamaha – You can select your instrument in the combo box “Model”. Basically all instruments of the series PSR-9000/740 resp. 8000/730 etc. make use of the same style format (Yamaha Style File Format, SFF format), but they differ in regard of the available sounds and the number of style parts. Therefore we recommend to select your instrument here. If it is not part of the list then select “PSR-9000” for instruments with 4 variations and “PSR-8000” for instruments with 2 variations.

Korg – As Korg instruments save several styles into one single file the desired user style position in the style bank must be selected. The current selection is being displayed by the text "User Style xx". E.g. if User Style 02 is the current selection all operations will affect the style on position 2, i.e. you will find a new, converted style in this position after loading the file into your instrument. You may select several user style positions for the conversions first and then save them all together. The file name (which will appear on the file list in your instrument) will be set when saving, default value here is the name of the

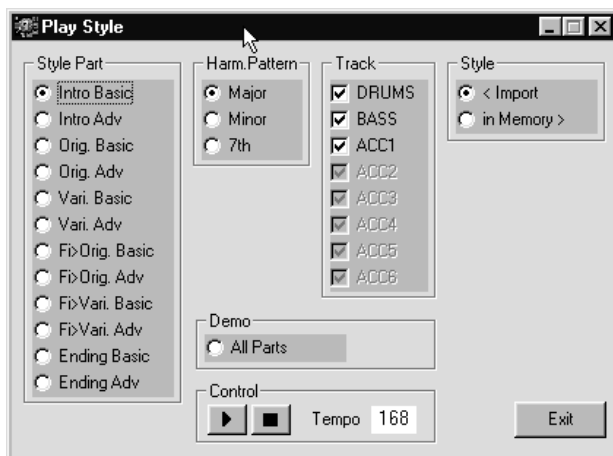
style converted or created last. In other cases the original file name will be maintained.

In addition there is a selection of the instrument here, too.

The old Korg series (i1-i5 incl. ix300) makes use of an identical style format, but from i4s and up Arrangements and Styles are always loaded together and therefore must be saved in the program together as well. i1 – i3 provide even a separate loading of user styles. We recommend to select your instrument here.

For the new i-series (i30-i50) there are differences regarding the number of user styles in a bank, sounds and how the style data are being organized on disk (i30 creates a folder with several files, i40/50) not.

The “Play Style” module



Here you can play the currently loaded style with the PC sound card (or with your instrument via midi output). The single style parts can be played with all existing harmony patterns (regularly major, minor and 7th), single tracks can be muted. As an additional control empty tracks resp. empty harmony patterns are inactive and not selectable.

The icons of the “Start”/”Stop” buttons equals those of a tape deck, in addition you can start /stop the playback by pushing the “Space” key on your computer.

Special features:

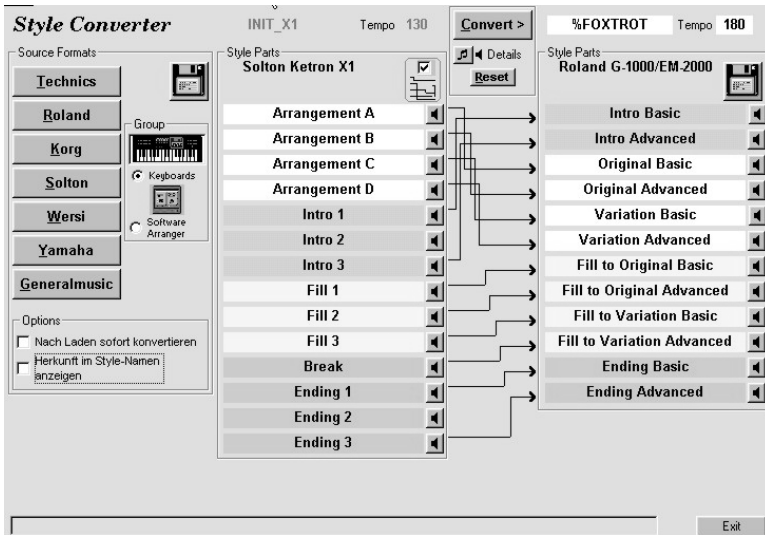
Yamaha – as the playback result would not be very satisfying when playing the data exactly as stored in the style (due to the very complex track parameters) the program simulates the result of playing a major, minor and seventh chord (marked by the text “(sim.)” next to the name of the harmony pattern).

Technics – as there is more than one memory bank for KN2000 and up the desired bank can be selected in a combo box.

Wersi – for the old and new Pegasus series the function of the “Advanced” button on the instrument is being simulated (i.e. the tracks “DRUM+” and “ACC+” are being switched on and off accordingly).

Calling the Play Style module when inside the Style Converter:
By clicking the “**Details**” button next to the score symbol you can call up the Play Style module. Now you can even listen to the currently loaded style in the destination format (“Memory”) as well as the style currently loaded for conversion (“Import”).

The Style Converter



In the Style Converter you can convert almost any style to the format of the relevant destination format. The complete style structure is being transferred and adapted to the structure in the destination device.

Proceed like this:

- Select the manufacturer in the left column for which the style was made ("Technics", "Roland", "Yamaha" etc); the current keyboard brands are available here as well as some software arranger formats.
- Select the desired instrument in the list eventually showing up.
- Now the regular Windows file select box opens (Exception: for Generalmusic WK4 /8 there is a specially desinged file select box as the data structure prevents the use of the standard file selector). Now select the style which you want to convert. Of course you will have to select the according folder on your haddisk or the floppy

drive first. Style Works 2000 memorises the path for each format in order to make your work easier when loading a second style of the same format later on; the saving path for each format is being memorised as well.

- After selecting the style the data will first only be loaded into the computer; after loading the name of the style and a row of loudspeaker icons will show up in the center block. By clicking one of them you can play the single style parts. This is quasi the “small version” of the Play Style module; therefore the parameters currently set in the Play Style module are valid here as well (Harmony Pattern, muted tracks etc). Open the Play Style module by clicking the “Details” button next to the score icon if needed.
- By clicking the “Convert” button (upper area between the two blocks for source and destination) the conversion will be initiated. After a couple of seconds you will find the style now in the format of your instrument in the right block. Again you may check the result by clicking the loudspeaker icons..
- Now you can save the new style to floppy disk or harddisk by clicking the disk icon in the block of the destination format.
- Attention: With option “Convert immediately after loading” the conversion starts right after the loading process and you will be asked by the program whether to save the new style instantly once the conversion is finished.
- In order to convert the next style just click the left disk icon. Only if you change to another source format you will have to make a new selection in the left button row.

Attention: When converting between instruments of the same manufacturer the loudspeaker icons will eventually not show up and there will not be any connection lines between source and destination format. If so the two formats are very similar and the data structures are exchangeable (e.g. conversion from Technics KN3000 to KN5000 or from Roland E-86 to G-1000). In this mode you will see the box “Automatic Part

Assign” being displayed between the blocks of source and destination format.

Manual Part Assign:

For each combination of source and destination format Style Works 2000 calculates a reasonable part assignment due to the existing parts; but you may set your own assignments as well. There are two options to do this:

- In the graphic mode (Flag next to the “lines” icon in the source format block is on) you set an assignment by first clicking a part of the source format and then moving the appearing rectangle to the desired position in the destination format (“drag and drop”). You may work vice versa as well. The connection lines between source and destination format will change according to the settings made.
- In the graphic mode you may highlight a certain assignment by clicking the relevant connection line. You will now recognise easily which part of the source format has been assigned to which part in the destination format. Multiple assignments are permitted.
- In the list mode (Flag next to the “lines” icon in the source format block off) the source part for each part in the destination format can be selected from a list showing up when clicking the position of the part in the block of the source format. In this mode the connect lines are always straight and the number of parts in source and destination block is always identical.

If you want to check the various assignments then switch option “Convert immediately after loading” off and push the “Convert” button for each conversion. If you want to check the various versions in your keyboard you must of course save after each conversion.

Special features:

Technics: In case of selection as source as well as destination a combo box will show up where you may select the desired Memory Bank into which or from which the conversion takes place.

Further you may choose by the selection “Composer Name” / “Part Name” if the composer name as written into the data is being displayed (e.g. “Samba 1”, “Rock’n Roll” etc) or the standard name of the part (“Variation 1” etc).

Korg : In case of selection as source a combo box appears where you can select the desired position within the Style Bank (Korg devices do not save single styles, but a certain number of styles together in just one file).

Depending on the combination of source and destination format there are numerous options affecting the result of the conversion

The Option “**Convert immediately after loading**” is available for all combinations. If active the conversion will be initiated right after the loading process. For devices having several styles in a file (e.g. Korg) the conversion will be initiated after a new selection within the style bank as well.

If option “**Show source in style name**” is active the name of the source device will be displayed in the style name resp. the style bank name (depending on the destination format. E.g. the new style name maybe “Rock *E86” after converting a Roland E-86 style.

Special features:

Source **Roland:**

“**Min. Bass Note G1**” – as bass notes in Roland styles are often very low a reasonable low limit can be set here.

Destination **Korg:**

“**Split Drums + Perc**” – as there are two drum tracks in the Korg format drum notes can be separated (automatically by percussion and “normal” drums).

"Intro2/Ending2: 7 > j7" – if enabled the sevenths in these parts will become major 7ths in order to ensure regular chord processing (not always appropriate, set according to the current source style).

"In/Fi/En: Prefer 7th Pattern" – in the Korg format there are only two Chord Variations for Intros, Fills and Endings. As 7th patterns will work for major as well you may instruct the converter to take them (if existing).

"No 7th in Major and Minor" – Seventh intervals occurring in the major and minor tracks of the source formats will be transformed to octaves to avoid problems in the Korg-specific chord processing (normally off). Of course, seventh intervals in the Seventh pattern will be maintained